



PCPL™

SAMRAT

SUCCESS is defined by those
who make a **SMART MOVE.**



The world belongs to those who
DECIDE their **DESTINY**.



Dreams come alive only for those who
REALISE THE VALUE OF TIME.




Treat yourself to something **LEGENDRY.**



 PCPL
SAMRAT


LIVE like a LEGEND.

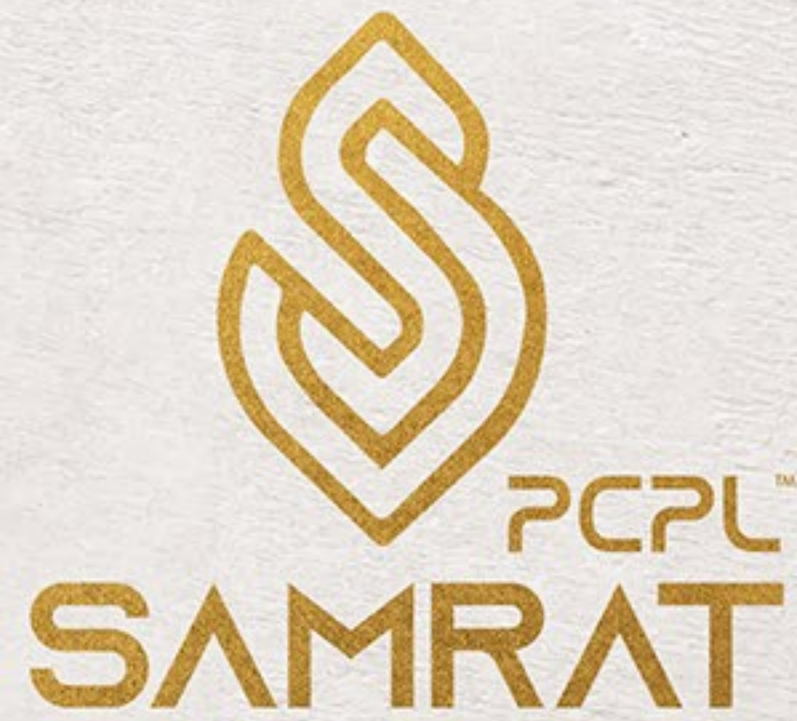




PCPL™
SAMRAT




PCPL™
SAMRAT



IT'S TIME TO MOVE INTO A NEW HOME IN STYLE.

This stunning home is a modern expression of luxury, designed for the discerning buyer who appreciates contemporary style and high-quality construction.

Luxury comes in all shapes, sizes and styles. Find your new home in the comfort of this contemporary lifestyle that's as timeless as it is modern.



Sculpting bodies,
forging spirits.

Welcome to the arena of transformation.

A modern gym interior featuring a row of treadmills on the right, a living wall on the left, and a yellow text overlay. The gym has a clean, minimalist design with white brick walls, wooden accents, and recessed ceiling lights. The floor is made of large, light-colored tiles. In the foreground, there are two dark grey mats with a red jump rope and two green chairs. The text overlay is a semi-transparent yellow rectangle with white text.

Gymnasium

The gym is not just a place where you exercise, but also a place where you can unwind.



Entrance Lobby

Stepping into the entrance lobby feels like entering a futuristic realm. The walls are clad in sleek, reflective panels, creating an illusion of endless space. The encounter will surely tease your senses and promise a unique experience ahead.



Living Room

The living room holds an untapped potential. Sunlight stretches across bare floors, highlighting the clean, open space. Walls stand ready to showcase memories and creativity yet to come.

* Image used for representational purpose only.



Dinning Area

The dining area is a place of shared moments and culinary delights. A tastefully arranged table will set the stage for intimate gatherings. From the clinking of glasses to the laughter that fills the space, this area becomes a hub for connections and conversations that nourish both body and soul.

* Image used for representational purpose only.



Kitchen

The kitchen is a culinary haven where creativity comes to life. Polished countertops provide ample space for meal preparation. From intimate meals to grand gatherings, this space embodies both functionality and the joy of crafting delicious moments.



Bedroom

The bedroom envelops you in tranquility, with soft hues and gentle lighting creating a soothing ambiance. Curtains sway lightly, allowing a glimpse of moonlight. It's a haven of rest where worries fade into dreams.

A modern balcony with a brown armchair, a white coffee table, and hanging plants against a marble wall. The balcony has a glass railing and a view of a city. The wall is made of light-colored marble with vertical wood slats. Two hanging plants are suspended from the ceiling. A large potted plant is on the left. The floor is dark grey tiles. The railing is dark grey with a glass panel. The view shows a city with buildings and trees under a clear sky.

Master Bedroom Deck

The bedroom opens up to a charming deck, extending the living space into the outdoors. Adorne the deck with comfortable seating, offering a serene spot to enjoy your morning coffee or stargazing at night, right from the comfort of your bedroom.



Study Room

The study room is a cocoon of focused productivity. A spacious desk by the window, offers a panoramic view that inspires thought. It's a space where ideas flow and creativity thrives, making it an ideal sanctuary for deep thinking and learning.



Bathroom

The bathroom is a private sanctuary of relaxation and rejuvenation. Clean lines and modern fixtures create a sleek and functional space. The sound of running water soothes as you indulge in a luxurious soak or a refreshing shower, leaving behind the cares of the day. It's a place to unwind and pamper yourself in comfort and style.

Type A

In this spacious abode, every corner tells a story of comfort and freedom.

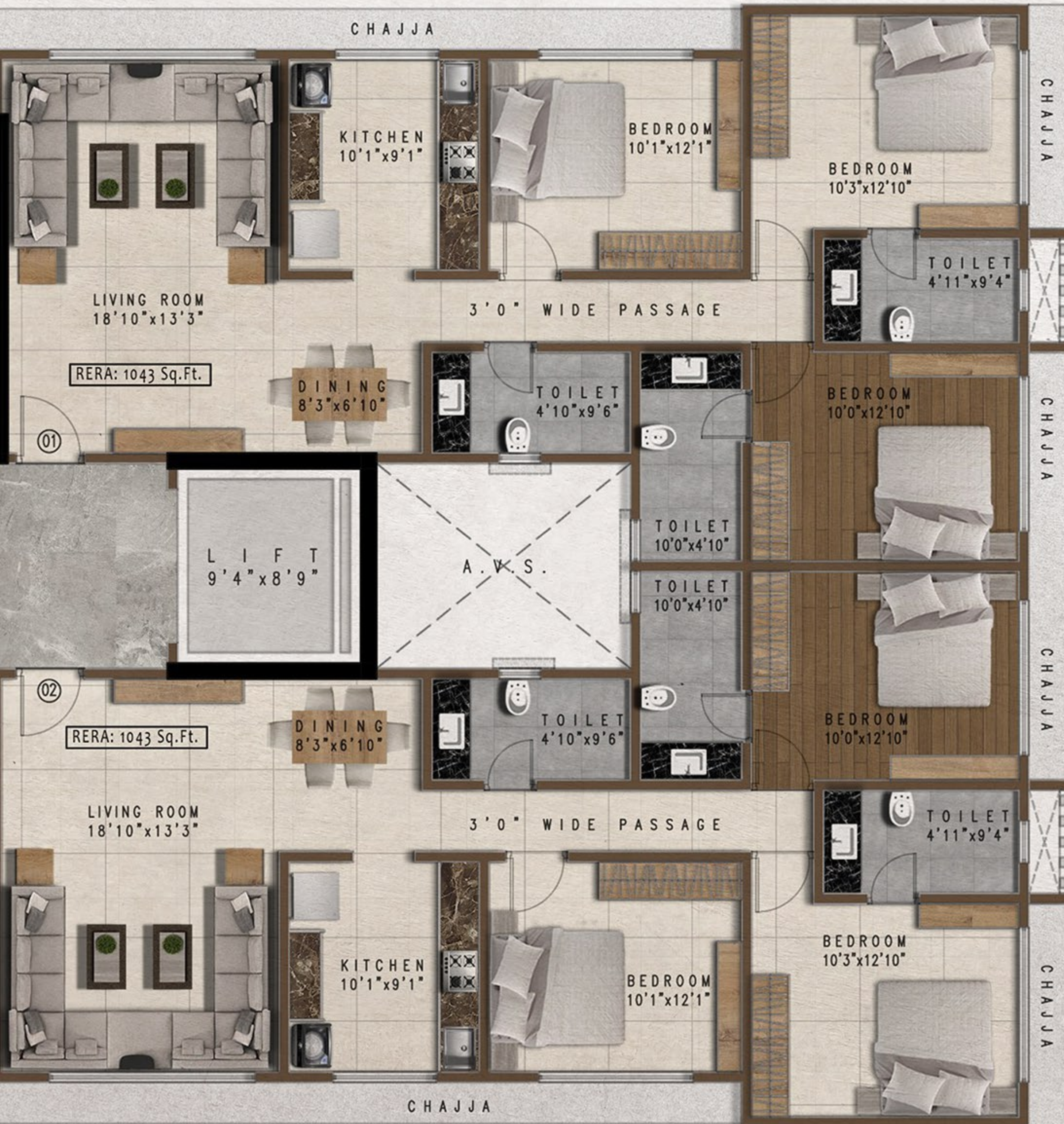


Flat Configuration :

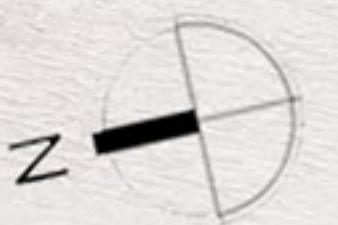
2 BHK - 630 sq. ft.

2 BHK - 678 sq. ft.

3 BHK - 1043 sq. ft.



EXPERIENCE
LIFE IN
WIDESCREEN.



Type B

A home that's spacious, comfortable & well-lit.
That's the dream and it's here.

WE'RE
LIVING
LARGE





Flat Configuration :
3BHK – 1219 sq.ft.



Experience **MUMBAI** like never before.



Get home **QUICKER.**

Domestic airport (T1) - **3.50 km** | International Airport (T2) - **3.2 km**



Location Salience

A cozy home is **closer** to the things you love.



Transit

Santacruz Railway Station : 0.80 km
S.V. Road : 0.10 km
Western Express highway : 1.90 km



Commercial Developments

Laxmi Industrial Estate : 7.10 km
Nesco IT park: 9.10 km
Nirlon knowledge Park: 9.60 km
BKC: 7.40 km



Recreation

Khar Gymkhana: 2.3 km
D'Monte Recreation Club : 4.00 km
Willington Club: 1.4 km
Juhu Beach: 3.0 km



Educational Building:

NMIMS Mithibai College : 2.60 km
Podar Institute of Education : 0.50 km
Khar Education Society : 1.60 km



Hospitals:

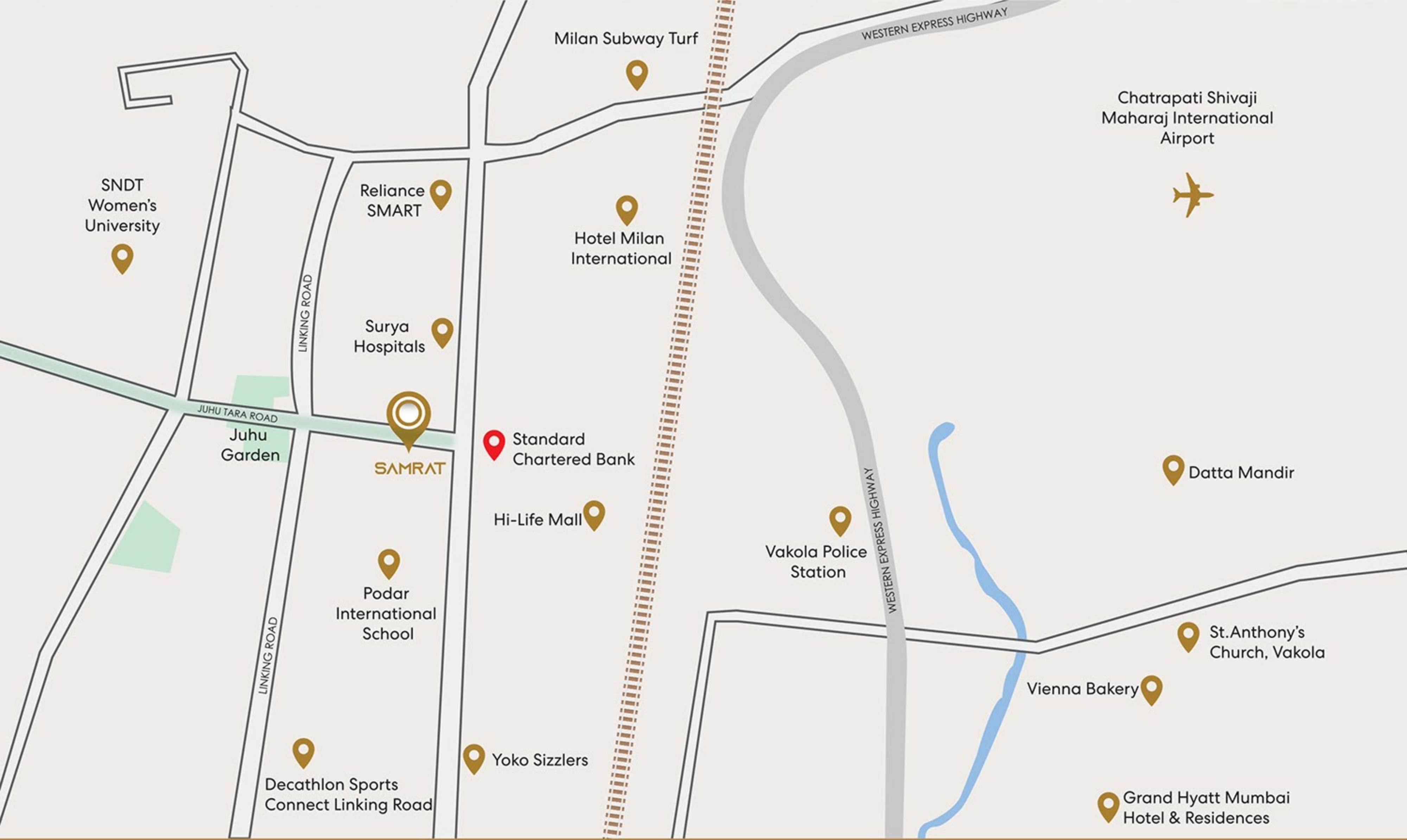
BCJ Hospital & Asha Parekh research Center : 0.40 km
Surya Hospital : 0.18 km
P.D. Hinduja Hospital : 1.80 km



Banks:

Standard Chartered Bank : 0.66 km
Central Bank of India : 0.18 km
HDFC Bank : 0.30 km





Follow the map.

It knows the way better than your instincts.

LIVE like a LEGEND.

  /WeArePCPL

For Enquiries : 022 6276 9942 / 43

www.pranavconstructions.com

Corporate Office; 1001, DLH Park, 10th Floor, S.V. Road, Opp. Goregaon MTNL, Goregaon (W), Mumbai – 62.



This Project has been Registered with MahaRERA under name of "SAMRAT",
Registration No.: P51800053827 available on <https://maharera.mahaonline.gov.in>